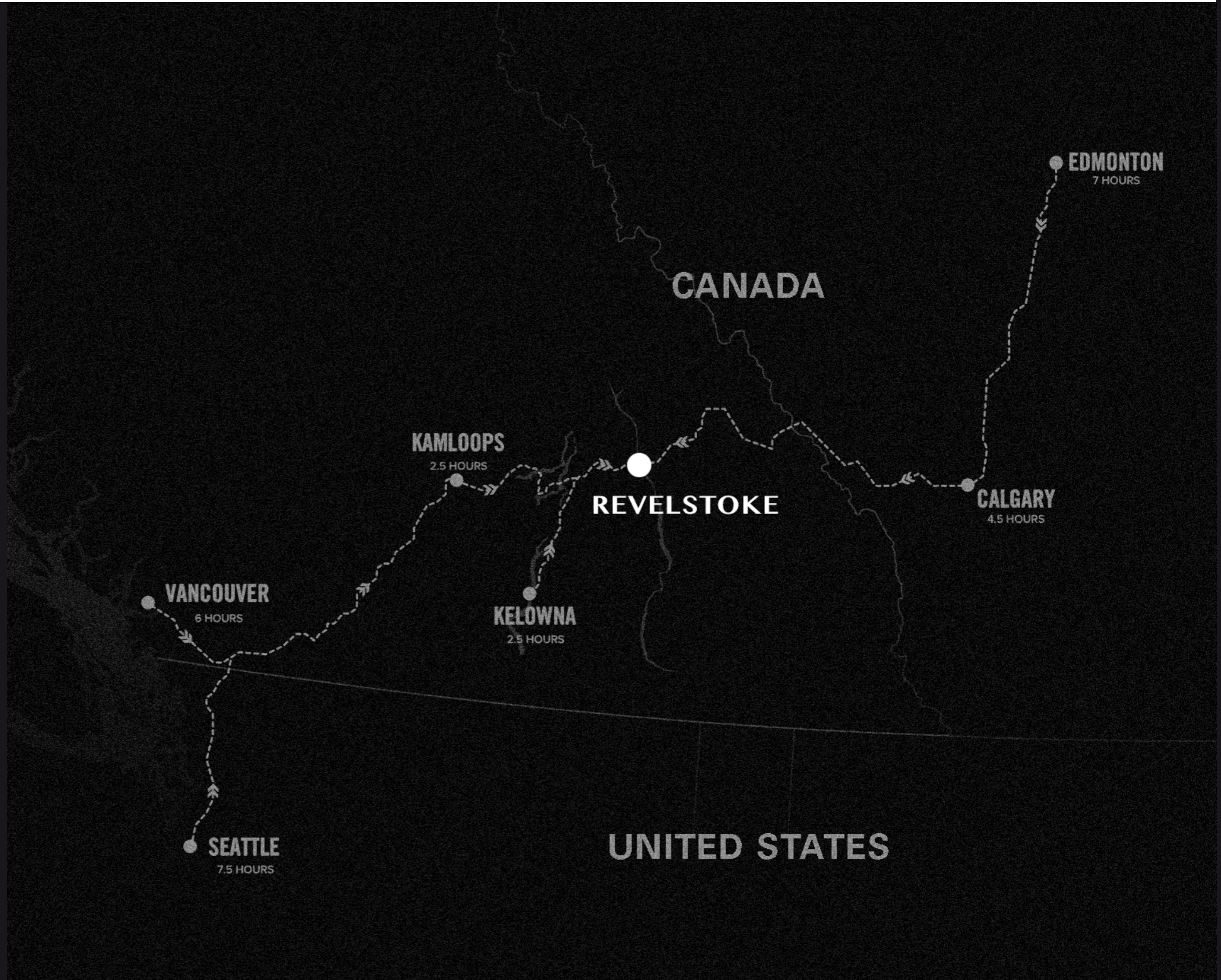


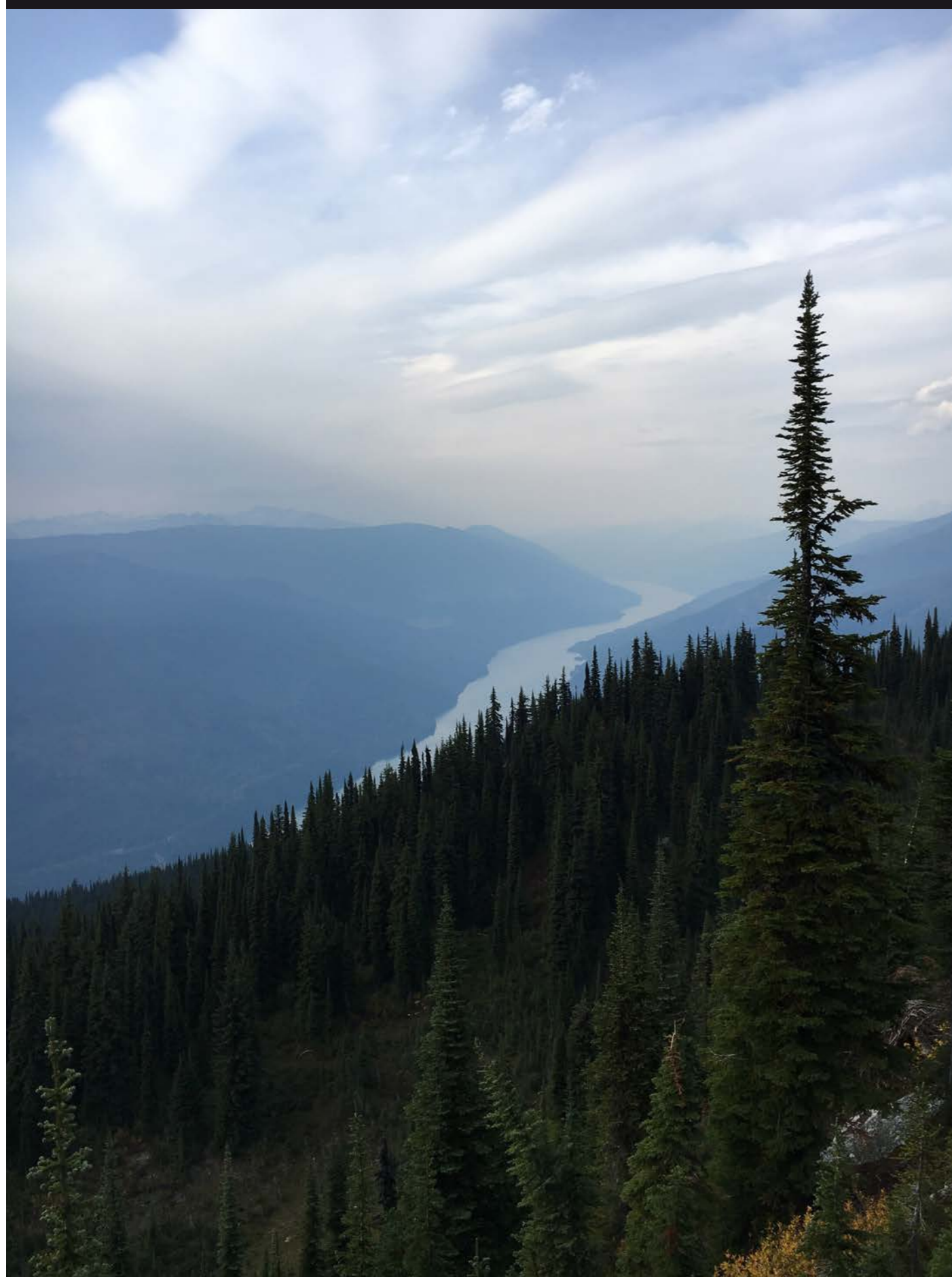


MOUNTAIN
PEAK LODGE





Project under construction



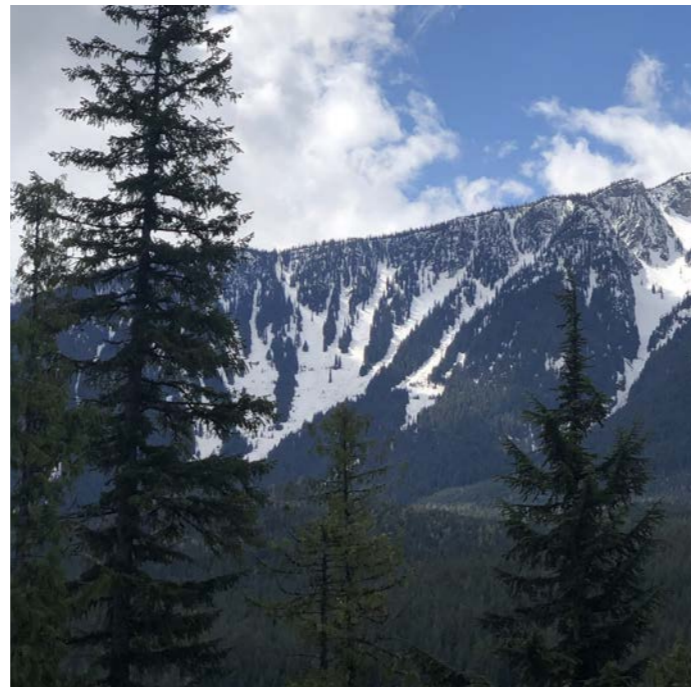
PHILOSOPHY

Set in the majestic mountains of the Canadian Rockies, the property is perched upon a plateau that offers panoramic views of some of North America's most impressive mountain landscapes.

The architect was inspired by the tradition of the great mountain lodges, blending luxury and comfort within rugged surroundings.

Locally sourced materials are used to create a project that is rooted in place, reflecting a commitment to the environment while ensuring a sense of authenticity and connection to the region's heritage.



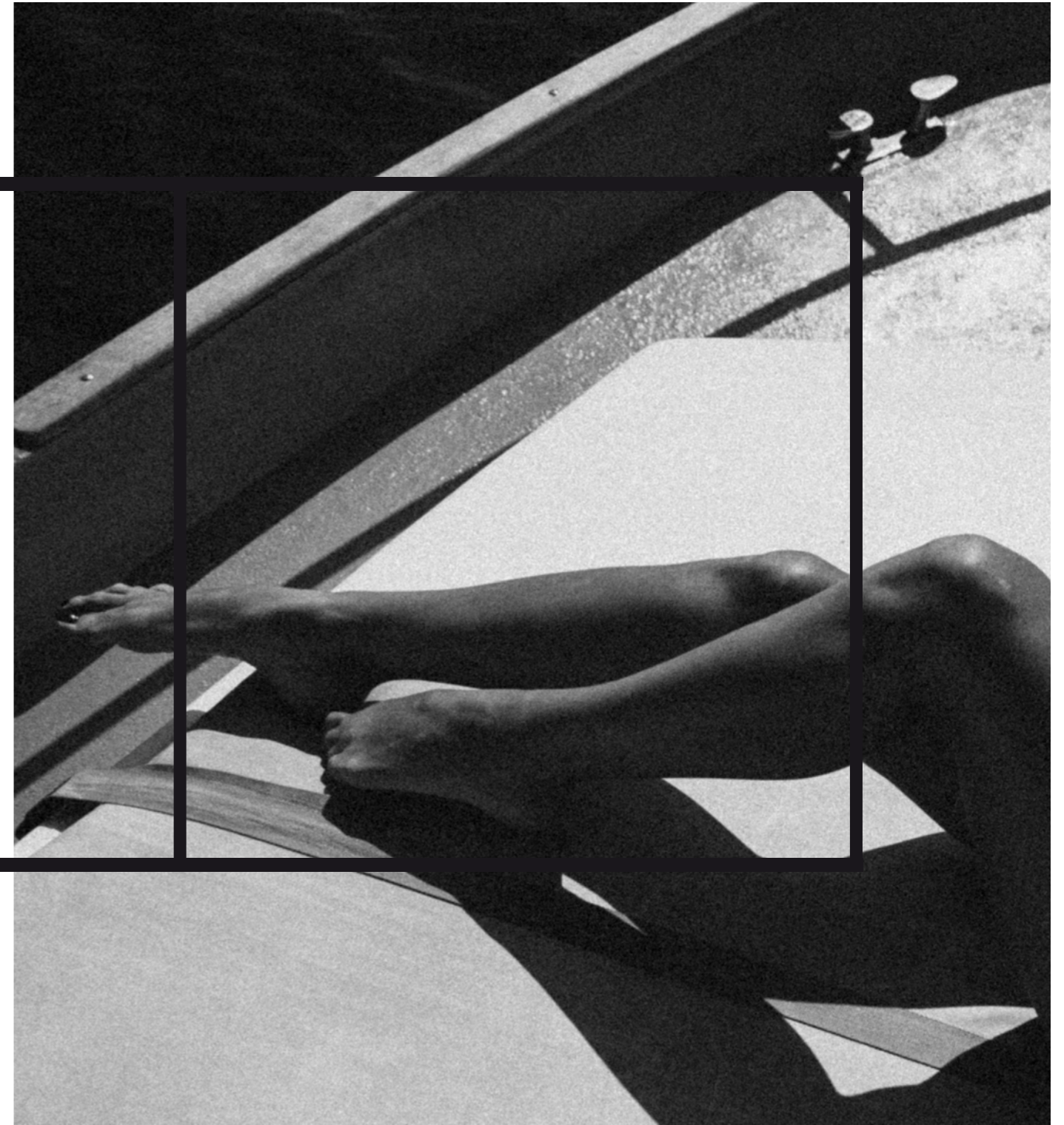
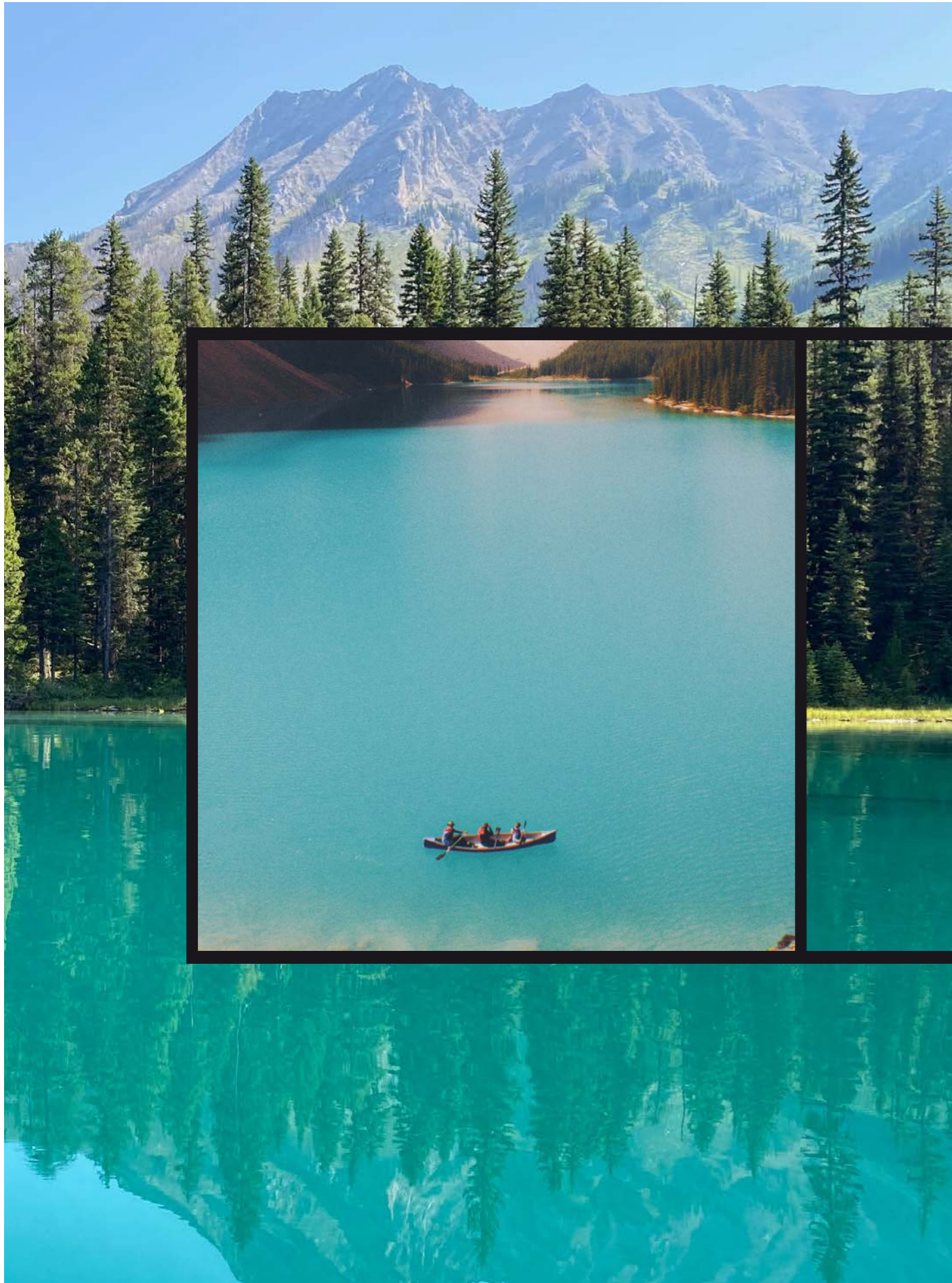


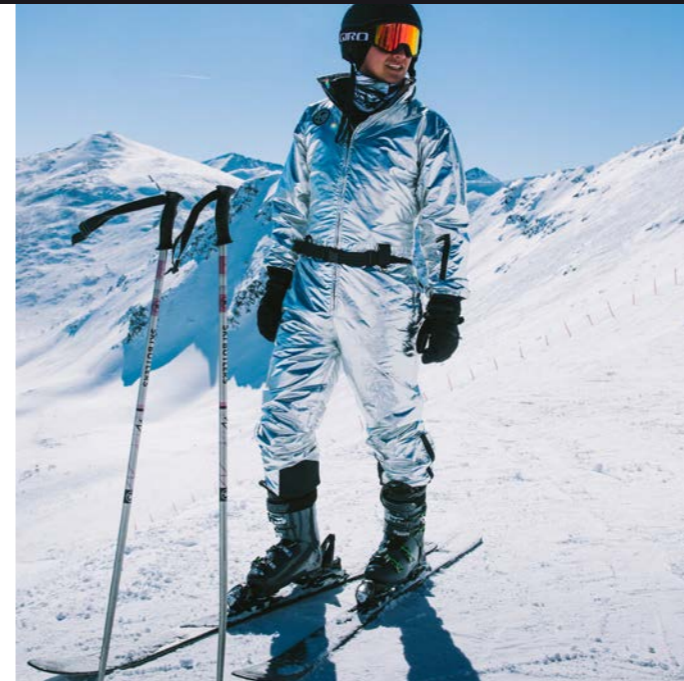


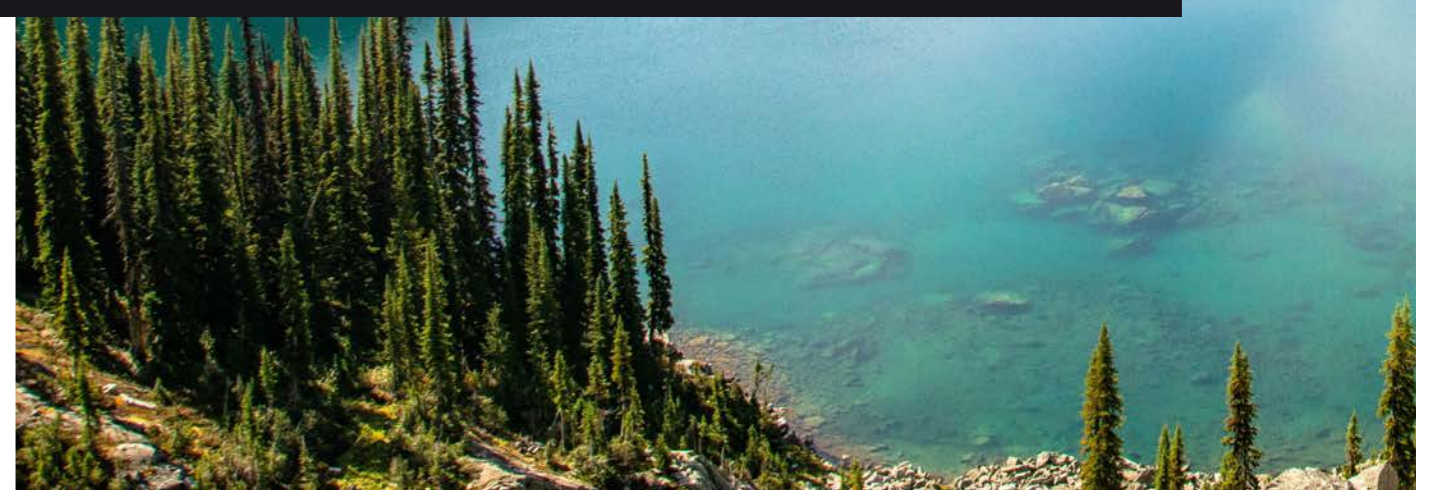
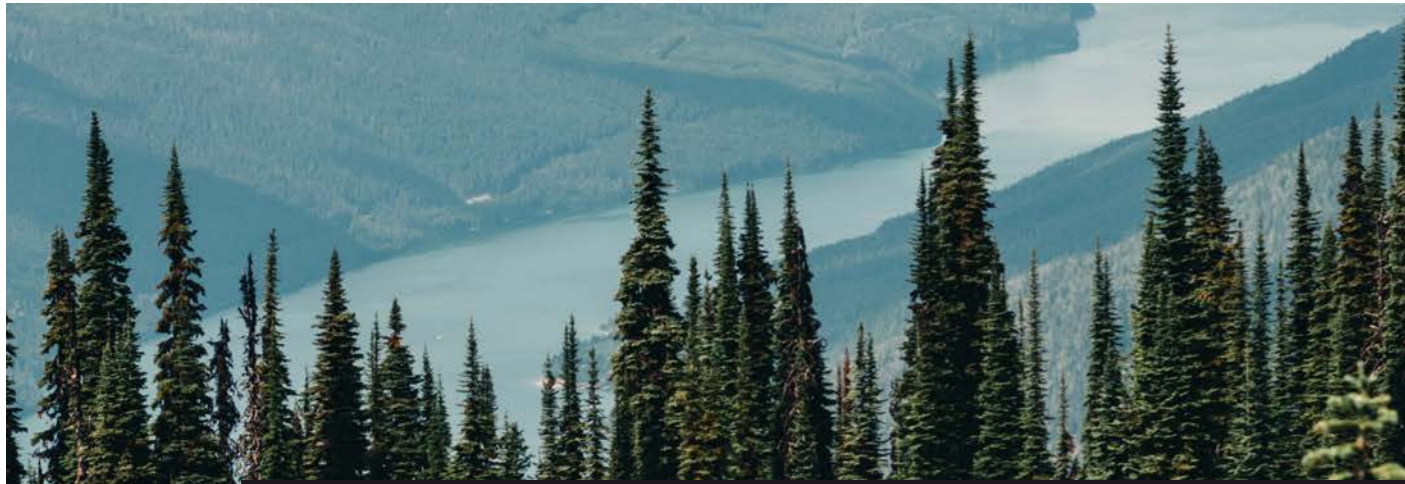
LOCATION

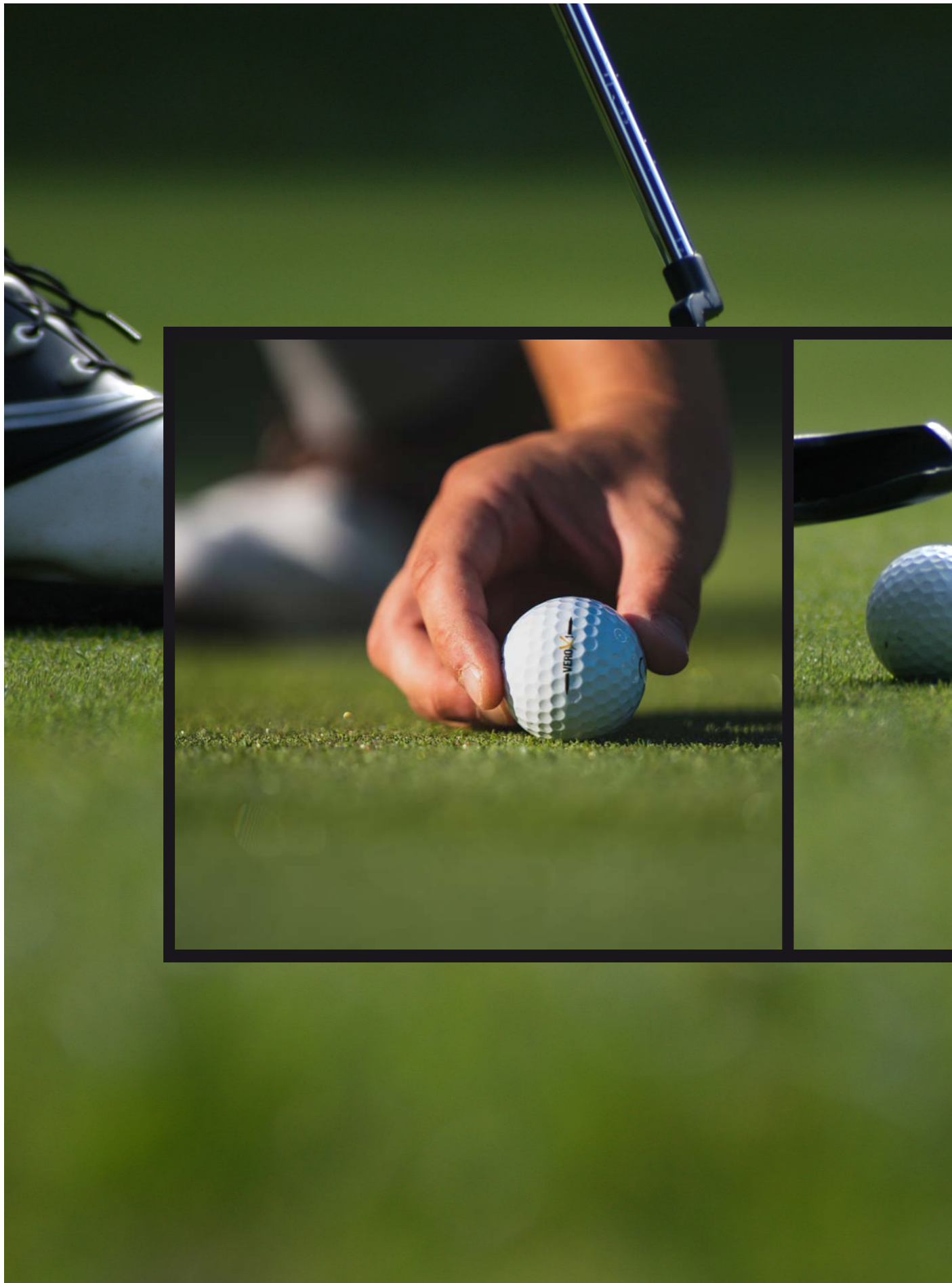
Revelstoke's unique geographical position in the Canadian Rockies renders it a haven for adventure enthusiasts while still allowing it to maintain an air of remote tranquility.

A stunning backdrop of snow-capped peaks and lush forests frames Revelstoke's distinct outdoor allure, from world-class skiing and snowboarding to hiking and biking trails that wind through the breathtaking Columbia Mountains.









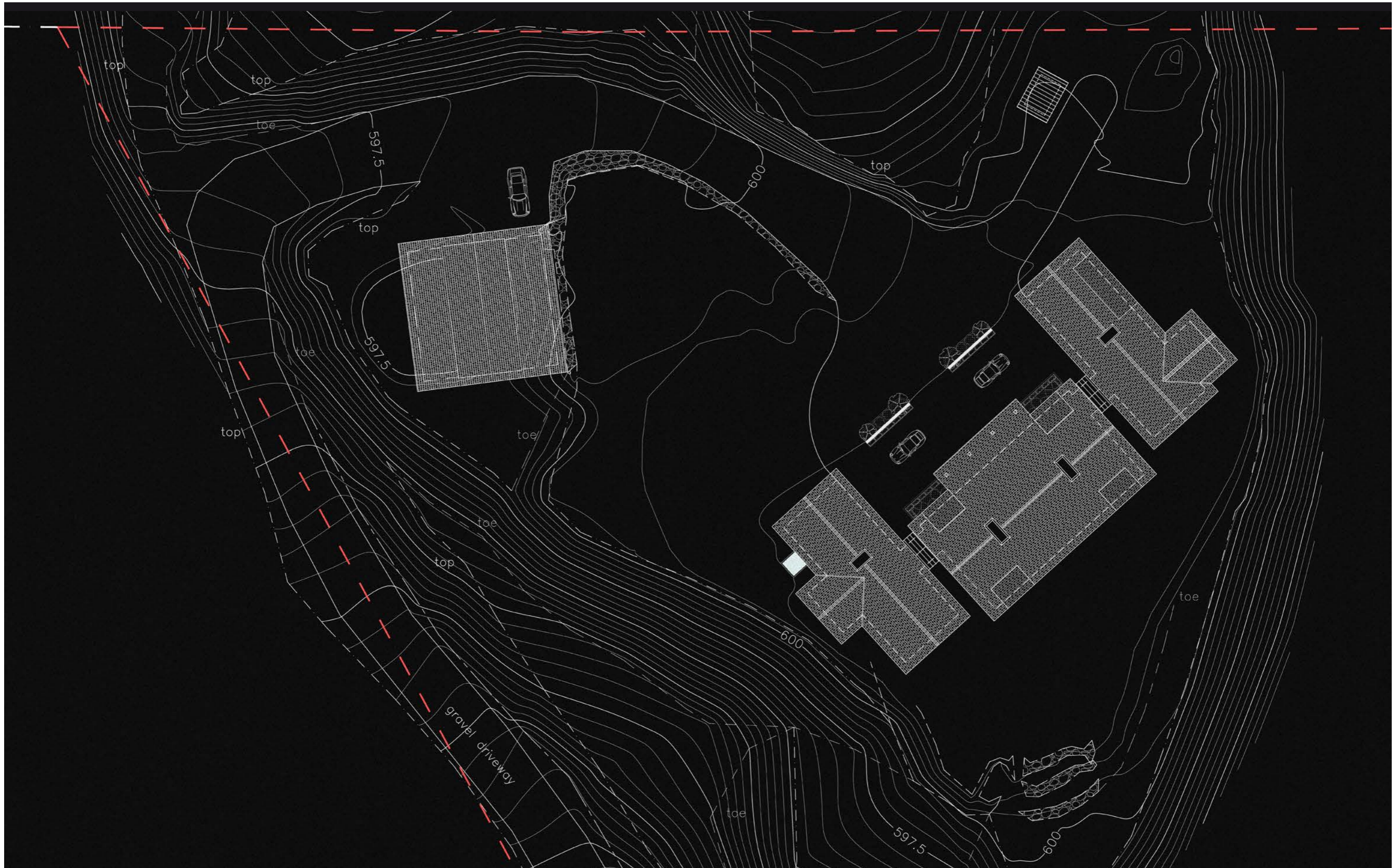


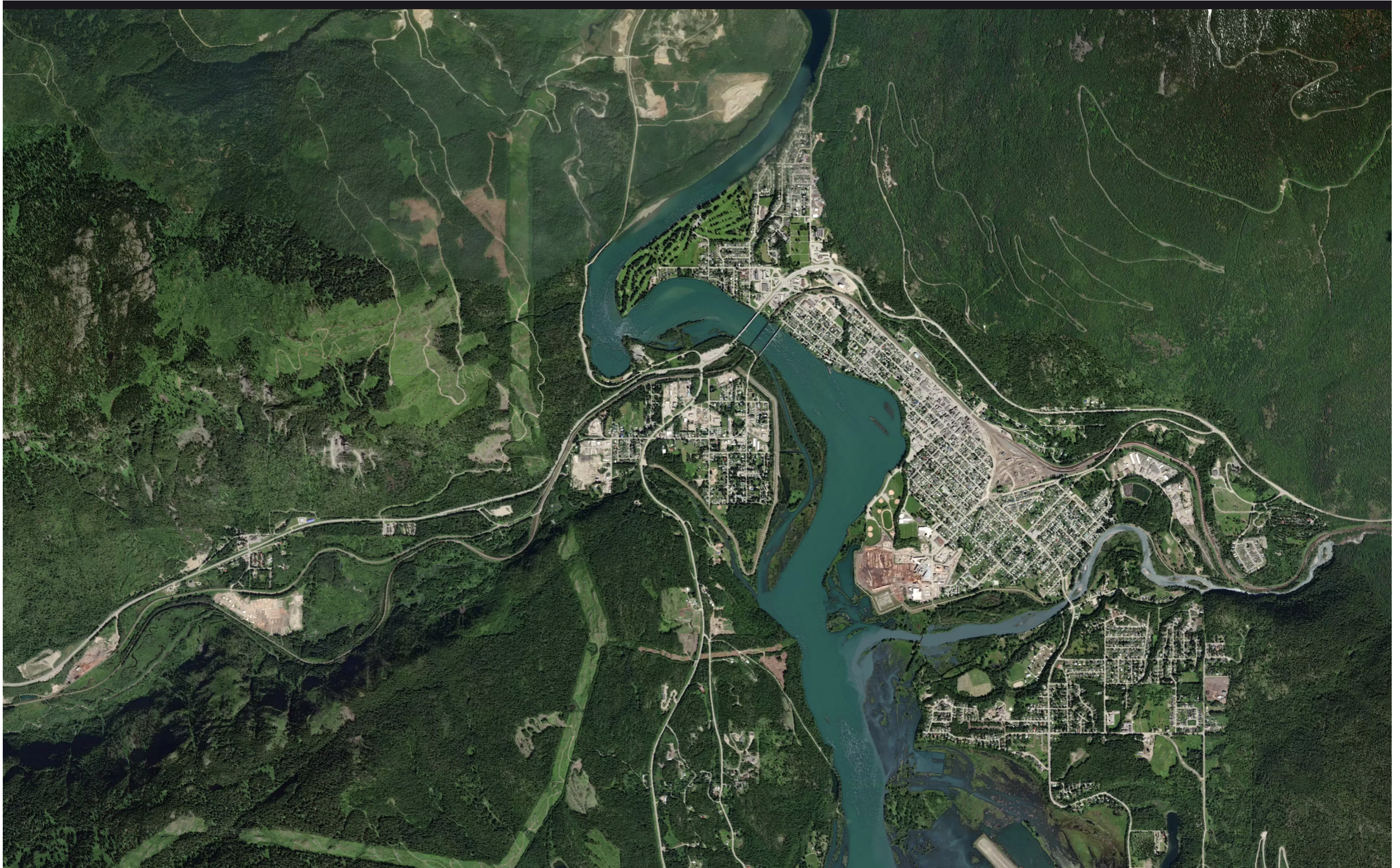
ARCHITECTURE

The home rests solidly on the site, oriented towards the view down the valley.

Built using native douglas fir, this log home was designed using traditional methods, reinterpreted with tailored contemporary details.











INTERIOR DESIGN

The residence encompasses over ten thousand square feet of living space, designed for hosting and entertaining.

The Great Room, at the heart of the house, opens up to a breathtaking view of the river. This double height space with exposed timber trusses, is served by a professional chef's kitchen and a separate back bar. The Den opens up to the landscape to create a cozy indoor/outdoor space.



The Billiard Room and Lounge provide yet another opportunity to unwind apres-ski.

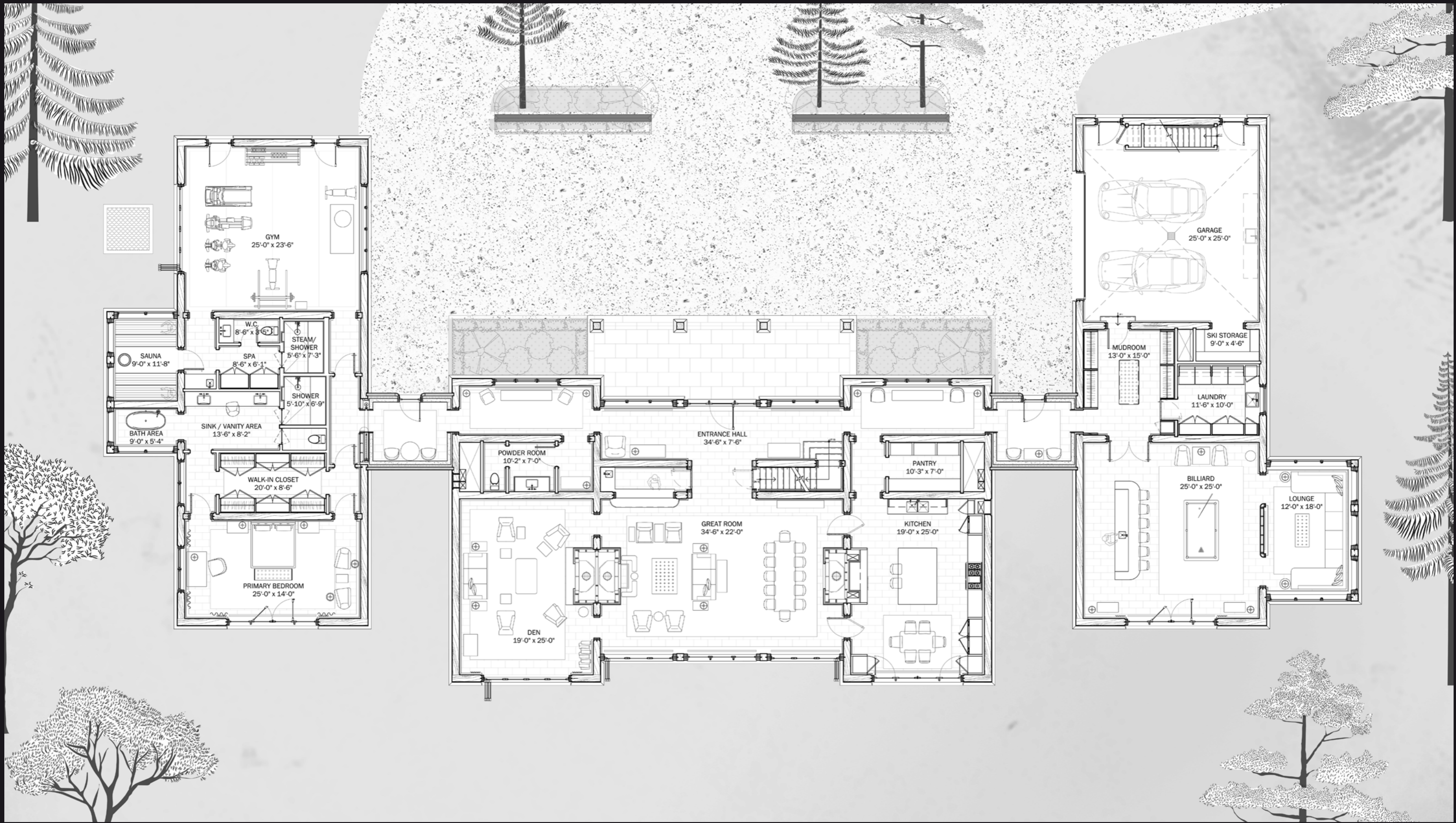
The luxurious master suite, with a spacious bathroom and walk-in closet, is situated in a separate wing of the house for privacy.

The gym and spa, complete with sauna and steam room, can be accessed directly from the primary bedroom, from the gallery, or from the courtyard.

Four generous guest bedrooms, each complete with ensuite bathrooms, are located at the second floor, away from the more public areas of the house.

A quiet retreat for staff can be found above the garage.





GYM
25'-0" x 23'-6"

GARAGE
25'-0" x 25'-0"

SAUNA
9'-0" x 11'-8"

BATH AREA
9'-0" x 5'-4"

PRIMARY BEDROOM
25'-0" x 14'-0"

DEN
19'-0" x 25'-0"

ENTRANCE HALL
34'-6" x 7'-6"

GREAT ROOM
34'-6" x 22'-0"

DEN
19'-0" x 25'-0"

PANTRY
10'-3" x 7'-0"

KITCHEN
19'-0" x 25'-0"

MUDROOM
13'-0" x 15'-0"

SKI STORAGE
9'-0" x 4'-6"

LAUNDRY
11'-6" x 10'-0"

BILLIARD
25'-0" x 25'-0"

LOUNGE
12'-0" x 18'-0"

POWDER ROOM
10'-2" x 7'-0"

WALK-IN CLOSET
20'-0" x 8'-6"

SINK / VANITY AREA
13'-6" x 8'-2"

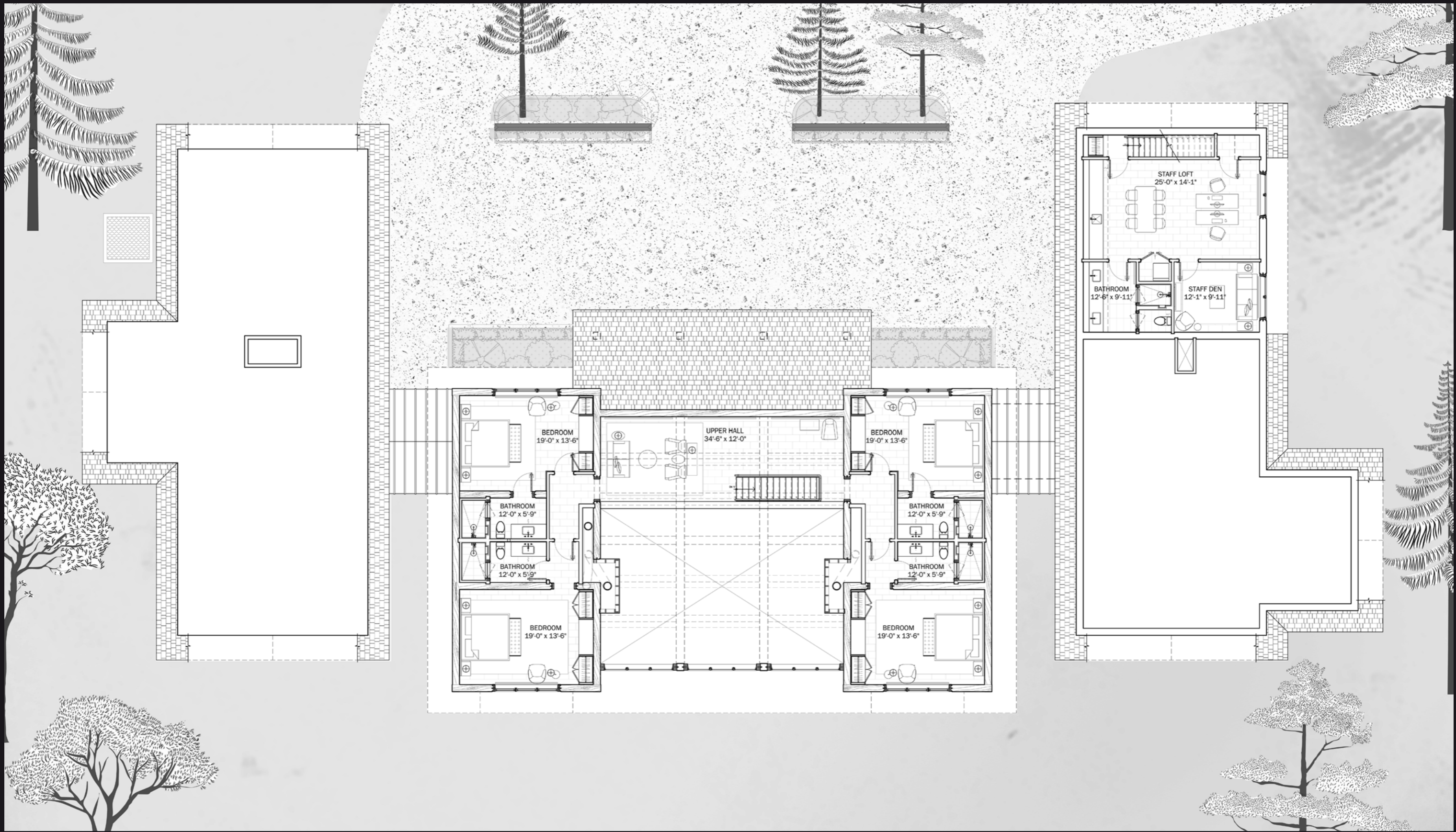
SPA
8'-6" x 6'-1"

W.C.
8'-6" x 3'-6"

STEAM SHOWER
5'-6" x 7'-3"

SHOWER
5'-10" x 6'-9"





BEDROOM
19'-0" x 13'-6"

UPPER HALL
34'-6" x 12'-0"

BEDROOM
19'-0" x 13'-6"

BATHROOM
12'-0" x 5'-9"

BATHROOM
12'-0" x 5'-9"

BEDROOM
19'-0" x 13'-6"

BATHROOM
12'-0" x 5'-9"

BATHROOM
12'-0" x 5'-9"

BEDROOM
19'-0" x 13'-6"

STAFF LOFT
25'-0" x 14'-1"

BATHROOM
12'-6" x 9'-11"

STAFF DEN
12'-1" x 9'-11"





LOT SIZE

4.25 acres

PROPERTY TYPE

Private ownership – Strata-titled

TYPE

- Single family home with 2 car garage
- Utility Garage (1230 sq.ft.)

BUILDING AREA

10 690 sq.ft.

BEDROOMS

- Primary Ensuite x1
- Guest Suites x4

FULL BATHROOMS

7x

POWDER ROOM

1x

CONSTRUCTION

- Solid log construction in Douglas Fir with dovetail
- Masonry clad base
- Roof in Class A fire resistant shake tiles
- Intermediate roofs and trims in copper
- Kolbe Heritage Series windows and exterior doors
- Siding and soffits in Douglas Fir

INTERIOR FINISHES

- Slate flooring (heated floors)
- Millwork in BC Fir with maple interiors
- Black Granite Countertops
- Rocky Mountain Hardware

AMENITIES

- Geothermal
- Lutron lighting control
- Sonos audio system
- Home Gym, Billiard Room, Cinema
- Lounge
- Sauna & Steam Shower
- Wood Burning Fireplaces x3
- Subzero Appliances

KEY PEOPLE



CYNTHIA KIDD

Managing Broker / Owner
RE/MAX Revelstoke Realty

A fourth-generation Revelstoke resident, Cynthia has more than 30 years in the Real Estate industry and has been the owner of RE/MAX Revelstoke since 2005.

Cynthia has enjoyed the lifelong luxury of exposure to the host of four season activities and culture that people who call Revelstoke home, are so fortunate to have.

Mobile

+1 (250) 837 1616

Office

+1 (250) 837 5121

Email

cynthia@
revelstoke-realty.com



MASSIMO SPATARO

Managing Broker / Owner
RE/MAX Revelstoke Realty

Mass was born and raised in Revelstoke. Having been born to Italian immigrant parents, Mass truly understands that hard work is the key element to being successful.

Mass places his professional responsibilities first and is readily available to serve his clients' needs as is evidenced by his induction into the RE/MAX Hall of Fame.

Mobile

+1 (250) 837 0049

Office

+1 (250) 837 5121

Email

mass@
revelstoke-realty.com



PHILIP HAZAN

Architect
Philip Hazan Design Inc.

Philip was born in Montreal and studied architecture at Carleton University and University of Montréal.

He gained a reputation internationally for unique, tailor-made high-end projects. Recent work includes the Four Seasons in Montréal, and residential projects in Miami and New York.

His iconic contemporary style is reflected in the various penthouses, apartments, city and country homes he designs for his clients.

MOUNTAIN
PEAK LODGE